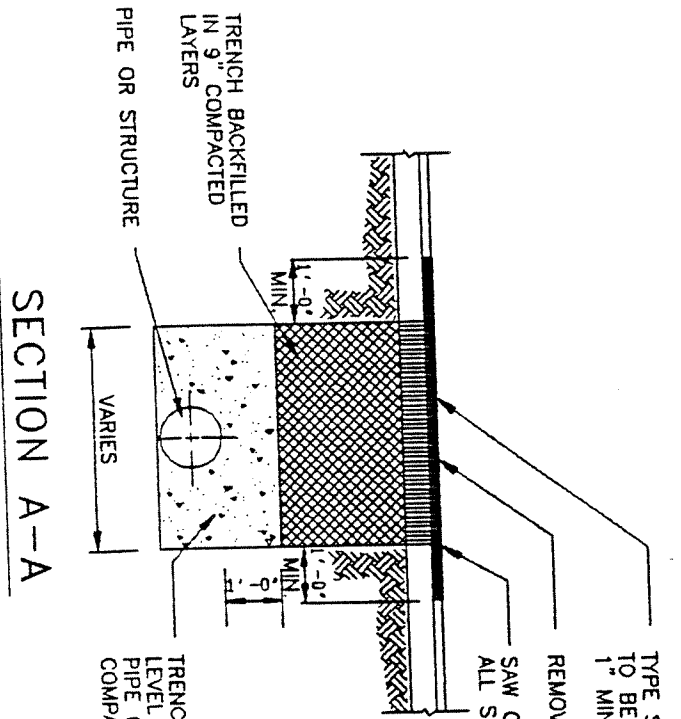
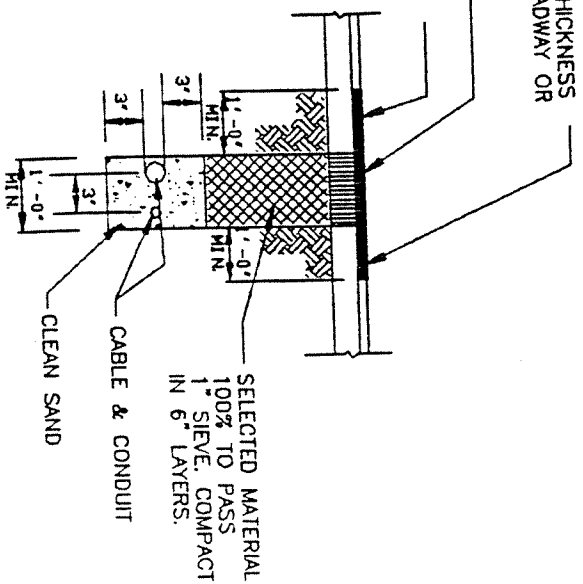


PLAN VIEW



SECTION A-A

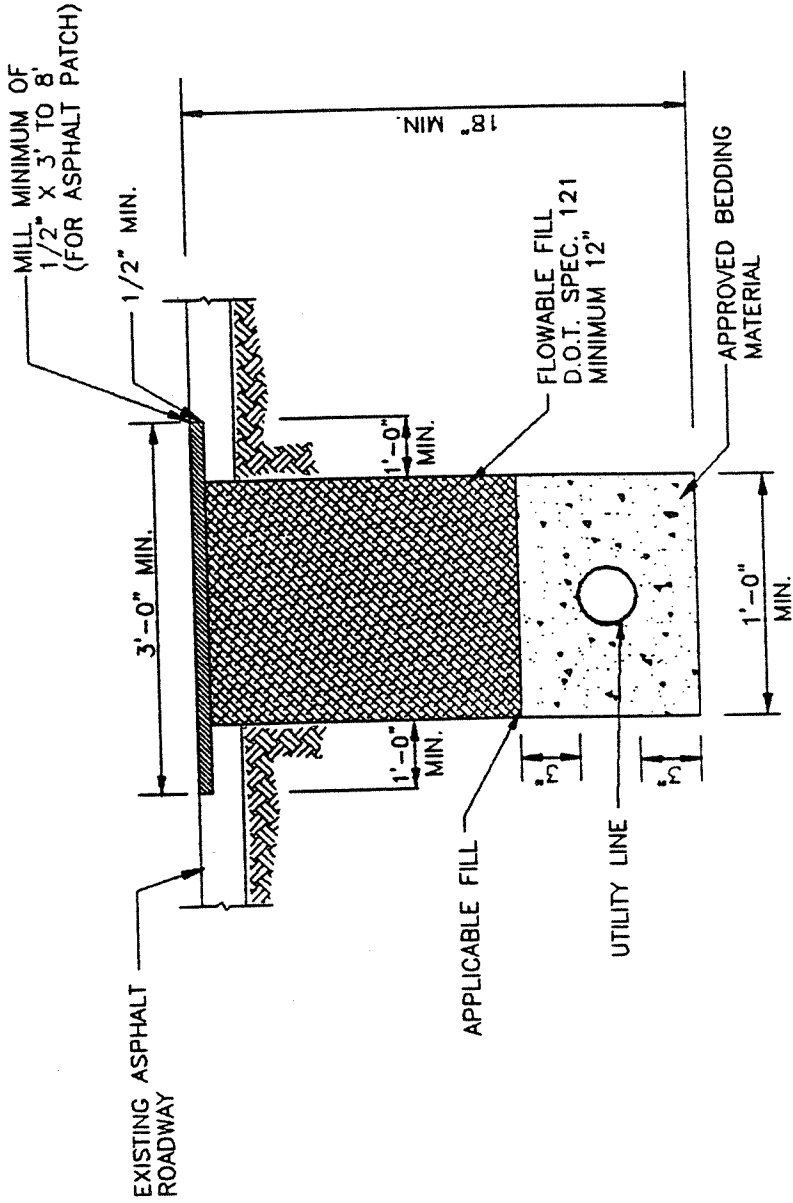
TYPE S-1 ASPHALTIC CONCRETE THICKNESS TO BE THE SAME AS EXISTING ROADWAY OR 1" MIN. WHICHEVER IS GREATER.
REMOVE OLD ASPHALT SURFACE
SAW CUT & APPLY TACK COAT TO ALL SURFACES AND EDGES.
TRENCH BACKFILLED TO A LEVEL ONE (1) FOOT ABOVE PIPE OR STRUCTURE, IN 6" COMPACTED LAYERS.



DIRECT BURIAL
CABLE OR CONDUIT

NOTE
PAVEMENT RESTORATION FOR LONGITUDINAL CUTS SHALL INCLUDE FULL LANE WIDTH RESURFACING FOR EACH LANE WITHIN WHICH THE CUT EXTENDS. IN SOME CASES IT WILL BE NECESSARY TO OVERLAY MORE THAN ONE (1) LANE W/ ASPHALTIC CONCRETE TO SATISFY PAVEMENT SLOPE.

ASPHALTIC CONCRETE	G2.0	B2-13
UTILITY PLACEMENT		
ITEM	CROSS REF.	SPEC. REF.



TYPICAL TRENCH RESTORATION
(ALTERNATE TO SECTION A-A)

ASPHALTIC CONCRETE	B2-13	
UTILITY PLACEMENT	G2.0	
ITEM	CROSS REF.	SPEC. REF.

MONROE COUNTY

PUBLIC WORKS DEPARTMENT

APPROVED

10/95

REVISED

STANDARD ROAD DETAIL

PAVEMENT RESTORATION FOR
TRENCHES CUT IN PUBLIC
RIGHTS-OF-WAY

R
17.2

SHEET 2 OF 2